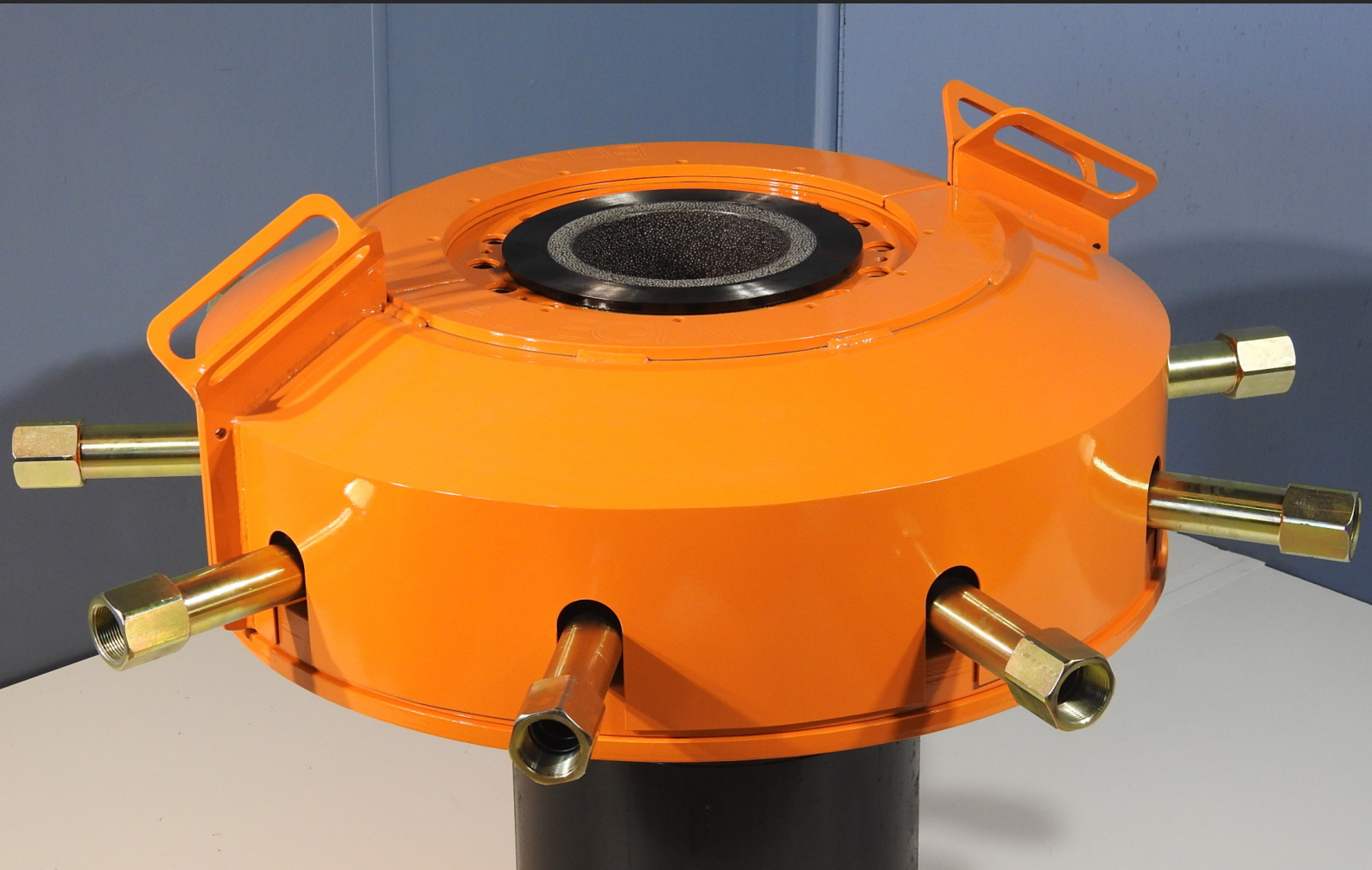


PASTE-360

PART OF OUR PASTE-365 SOLUTION



SMART, SAFE, WELL-SAVING TECHNOLOGY

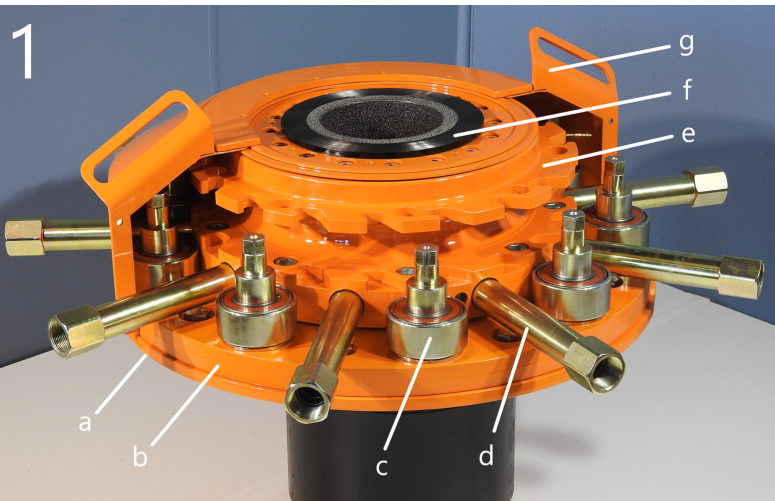
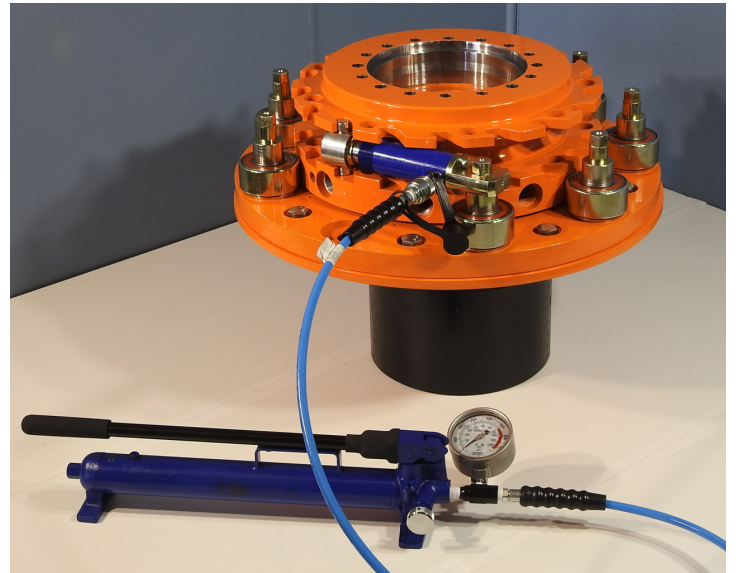
Introducing, **PASTE-360**, our unique internationally patented rotating wellhead. This innovative, one-of-a-kind wellhead system significantly extends the life of casing regardless of whether it is installed on a vertical or inclined well. Whilst the design is highly technical, ease of installation and operation has been engineered into the design ensuring that this asset saving device can be used on both new or existing wells.

With the addition of our bottom of well assembly, monitoring of the annulus for any pressure changes brought about by a breach of the production string caused by wear, can be achieved. This allows for immediate rectification to be taken by operators – reducing downtime and significant costs and most likely eliminating the cost of having to grout the casing in.

KEY BENEFITS

- **Rotates** production liner in small increments to allow for a more **even spread of wear**
- **Increases asset life**
- Facilitates the **flushing of the annulus** on the outside of the production liner
- Ability to **monitor pressure changes**
- Major wear components within the wellhead are lined with durable Ceramic Composite Lining
- **Fully serviceable**
- **Safe, efficient and cost-effective** method of reducing wear related issues
- **Reduce your unplanned downtime**
- **Increase your production time**

When used in conjunction with our premium threaded casing and patented rotating centralisers, the **PASTE-360** allows you to reduce expensive production downtime and the frequency of replacing casing by allowing you to monitor and distribute wear evenly around the liner.



Not only is this time saving, it also comes at a fraction of the cost of either frequent change out of casing, working over the well in the event it has been grouted in or the requirement to completely re-drill a hole.

THE FEATURES OF PASTE-360

- a. Bottom Landing Flange** Used to centralise the assembly and provide a stable mounting foundation.
- b. Intermediate Flange** Suspends the outer liner, houses bearing and seal mechanism.
- c. Guide Rollers** Centralises the rotating flange on inclined wells, provides mounting position for actuator.
- d. Flushing Ports** Allows for flushing the annulus between the production liner and outer casing. When **PASTE-360** is used with the **PASTE-365 Solution**, these ports also provide communication of annulus pressure for automated flushing functions.
- e. Rotating Flange** Suspends and rotates the entire length and weight of the production liner, provides for engagement of the actuator and houses the wear liner.
- f. Wear Liner** Replaceable insert, lined with durable Ceramic Composite Lining.
- g. Cover** A light and simple cover to shield all the important parts of **PASTE-360**.

To learn more, visit our website or socials:

